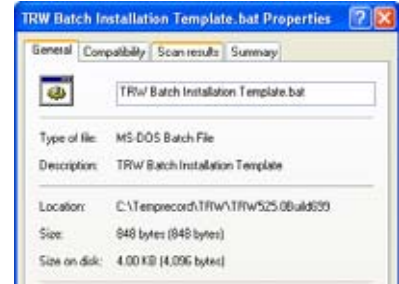
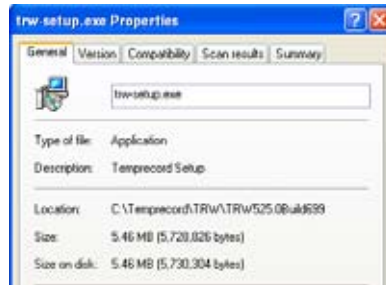
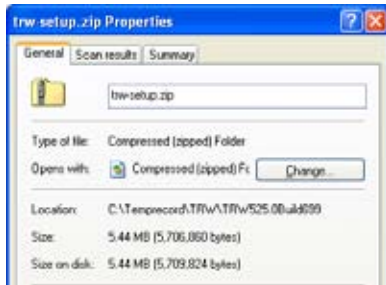
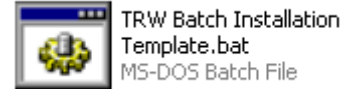
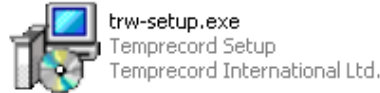


# Temprecord for Windows (TRW) Software installation info

The new TRW installation files available to Users are downloadable from [www.cardigantrading.com](http://www.cardigantrading.com) web Site or available on Mini 80mm CD Media or sent electronically attached to Emails as compressed ZIPPED files.



## TRW Installation Files and Size Information

The Temprecord program is generally distributed as a ZIP file named '**trw-setup.zip**'. Within the ZIP archive are three files:

### trw-setup.exe

The setup executable. Run this file to install Temprecord for Windows.

### readme.txt

Late-breaking news and version history – Created during installation of TRW.

### Install.txt

This notes.

### TRW Batch Installation Template.bat

A sample batch file to illustrate unattended Batch-Installations



The installation ZIP archive file contains EXE and BAT files. These file types are often blocked by System Administrators because of the fear they might harbour viruses. You may need to find alternate ways of distributing the installable other than email attachments.

The file '**TRW Batch Installation Template.bat**' is provided as an example of how Temprecord can be installed without user intervention in situations where the installation destination folder is known in advance. System Administrators should examine this file and edit it to suit their environment as necessary, although using it in its current form will generally install Temprecord satisfactorily.

To prepare the batch installation template to install Temprecord, the following steps are required:

- Unzip the TRW setup files into a temporary folder
- Copy the file **TRW Batch Installation Template.bat** to a new name
- Edit the new batch file and change the items shown in red on the following lines if required:  
set InstallLogFilename=TRW Installation Log.txt  
set InstallFolder=C:\Program Files\Temprecord\TRW\  
set InstallGroup=Temprecord

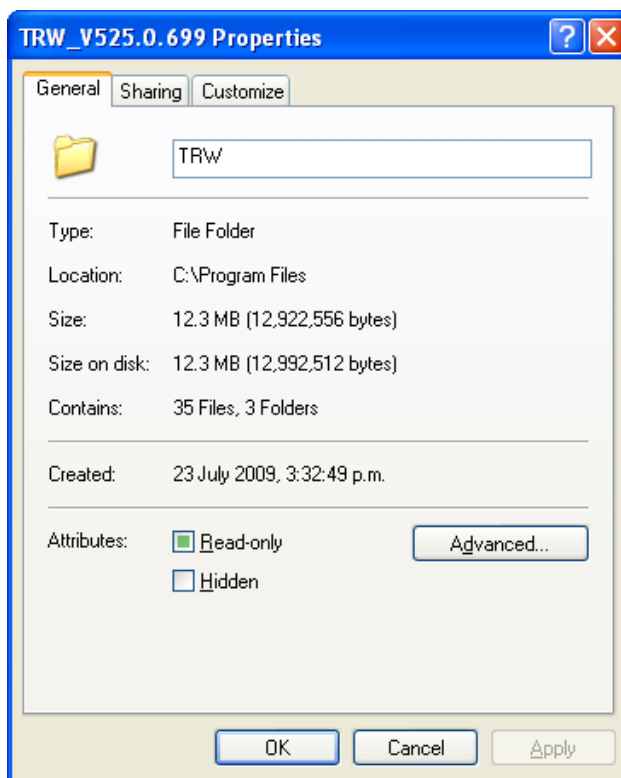
You need to deploy your edited batch file and the file **trw-setup.exe**. The other files **readme.txt** and **Install.txt** are already present in the setup EXE file.

To carry out the batch installation:

- Copy the deployment files (edited batch file and setup executable) to a temporary folder on the target installation machine
- Change to that folder
- Execute the batch file

## Temprecord for Windows – Installed Footprint

After successful installation of Temprecord for Windows, the total space used on Computer's Hard Disk is approximately 13.0 MB. This is known as the Installed Application Software footprint.



*TRW installed footprint*

## Temprecord for Windows – Installation

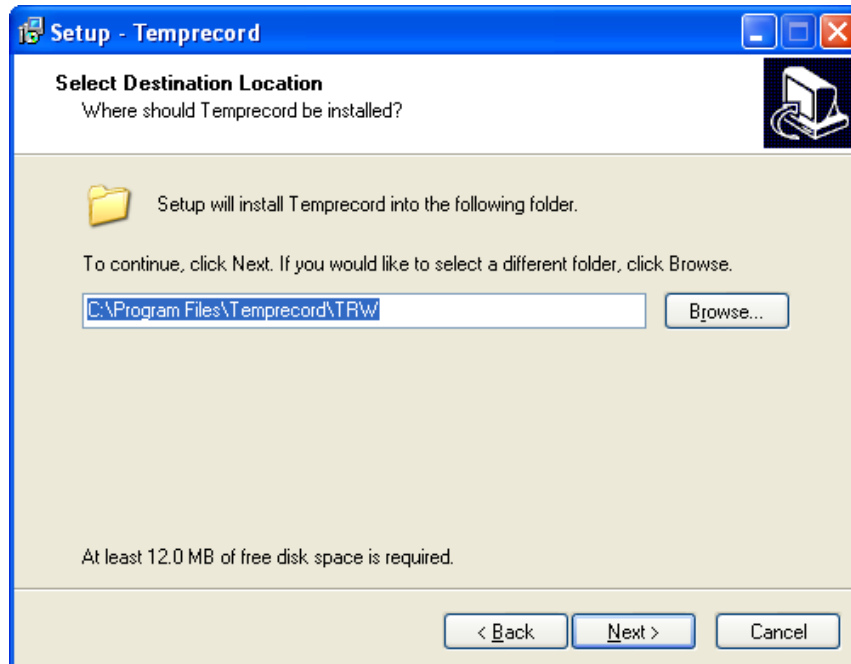


trw-setup.exe  
Temprecord Setup  
Temprecord International Ltd.

To begin installation of Temprecord for Windows, double-click 'trw-setup.exe'. This will launch the Setup Wizard as follows...

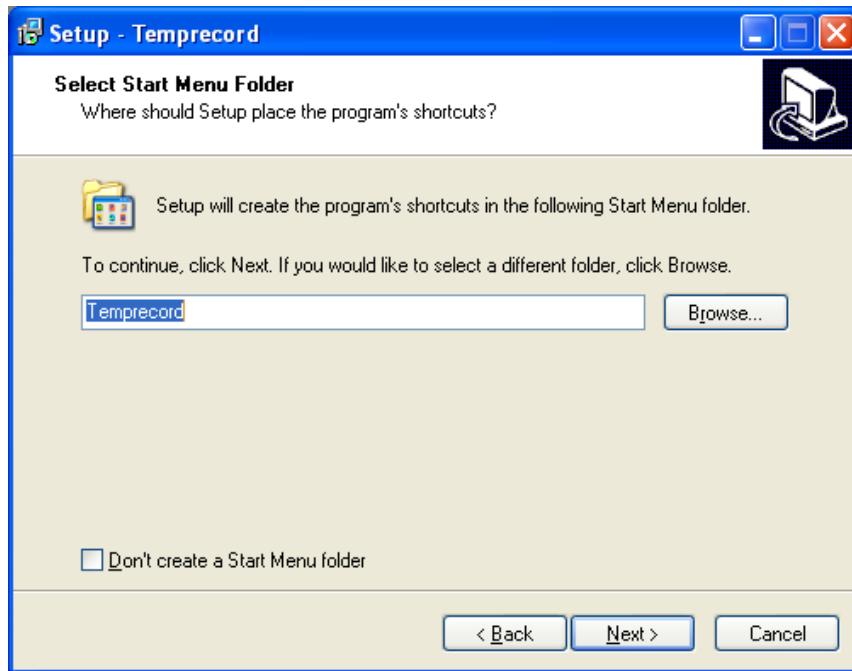


*Setup Wizard – Welcome Screen*

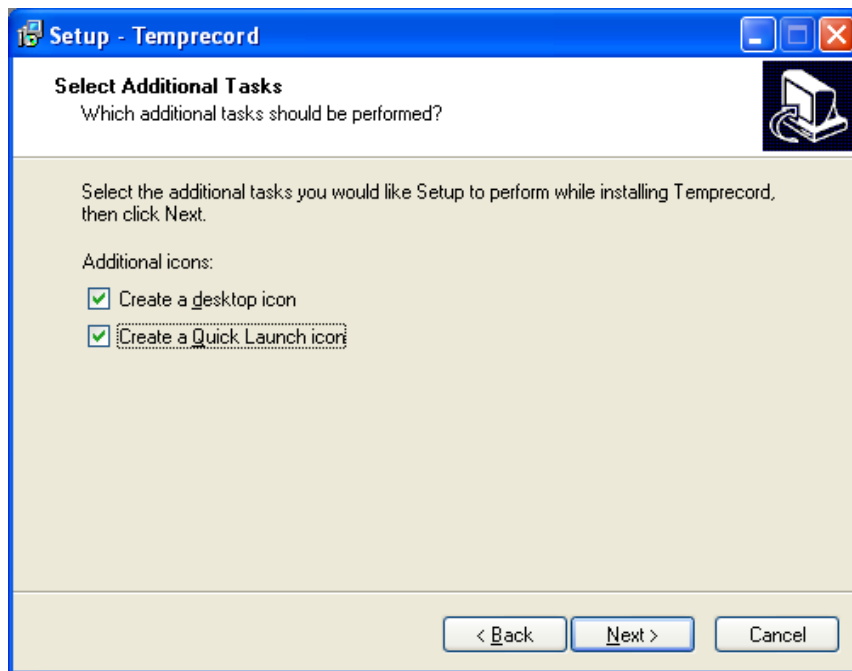


*Setup Wizard – Install Folder Path (Step 2)*

## Temprecord for Windows – Installation...

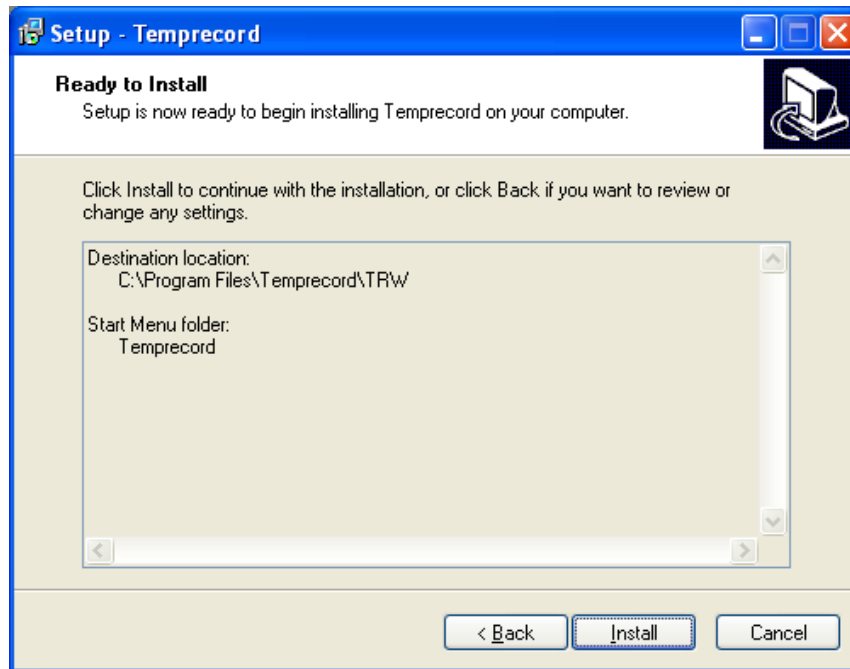


*Setup Wizard – Program's Shortcuts (Step 3)*

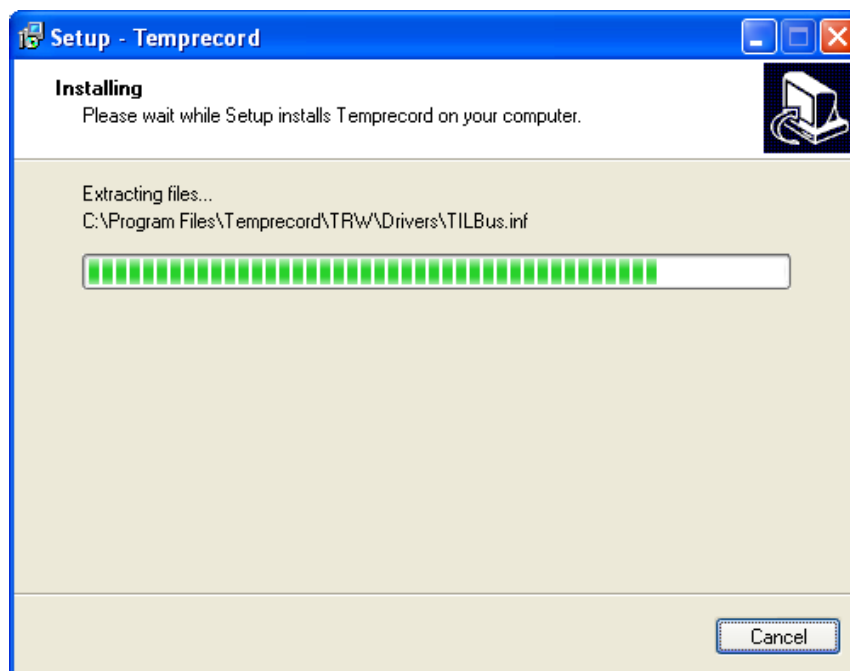


*Setup Wizard – Desktop & Quick Launch Icons (Step 4)*

## Temprecord for Windows – Installation...

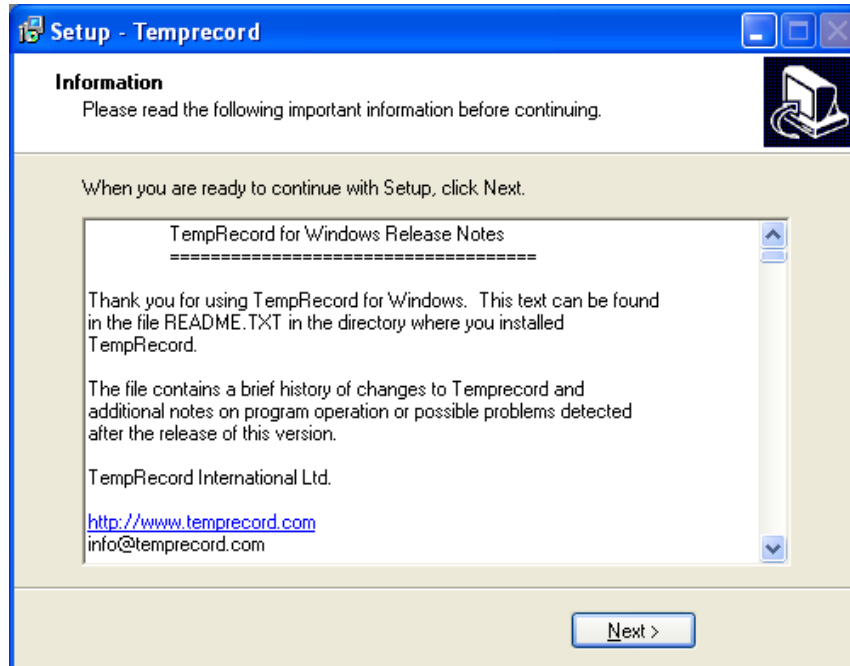


*Setup Wizard – Confirm Installation Folder Path (Step 5)*



*Setup Wizard – Install Progress... (Step 6)*

## Temprecord for Windows – Installation...



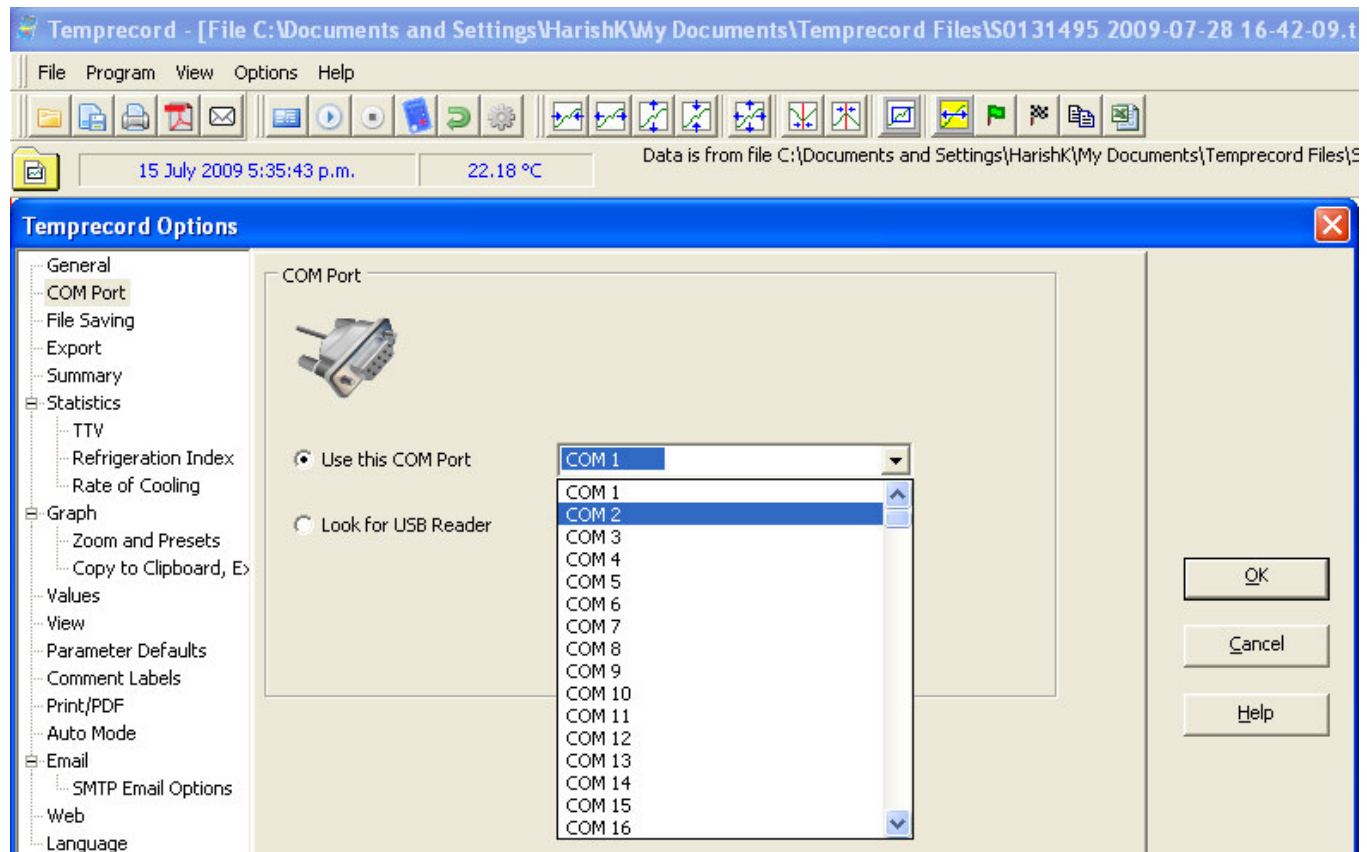
*Setup Wizard – ReadMe Information / History Text (Step 7)*



*Setup Wizard – Installation Complete (Step 8)*

## Temprecord for Windows – Initial Configurations...

### Options/COM Port



### TRW Configuration – Options/COM Port: Serial RS-232 COM Port Setting

### TRW Configuration

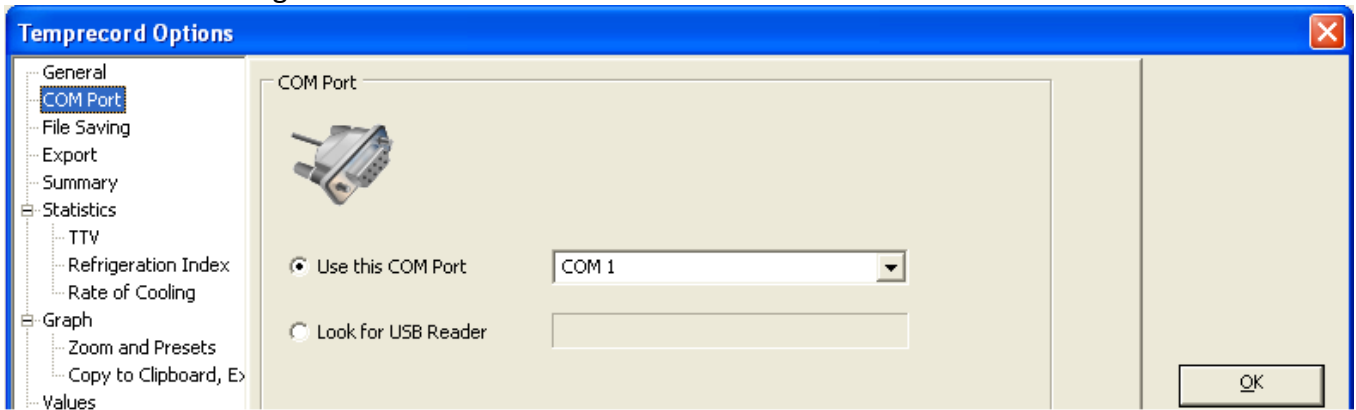
#### Options/COM Port: Serial RS-232 (COMx) Communication Port Selection

Temprecord Reader Interface (SR2-RS232 Product Code # 952181) connects to Computer's Serial RS-232 Communication Port. Most pre-2008 computers were fitted with **COM1** and **COM2** as standard.

- Connect the Temprecord Reader Interface to either of the available COM Port on your computer.
- Select **Options** then **COM Port** to access COM Port settings screen
- Ensure that **Use this COM Port** is selected, then select the COM port number (e.g. COM1) to which the Reader Interface is connected on your Computer.
- Click **OK** to confirm.

## Temprecord for Windows – Options/COM Port Configuration...

Refer to the following screen...



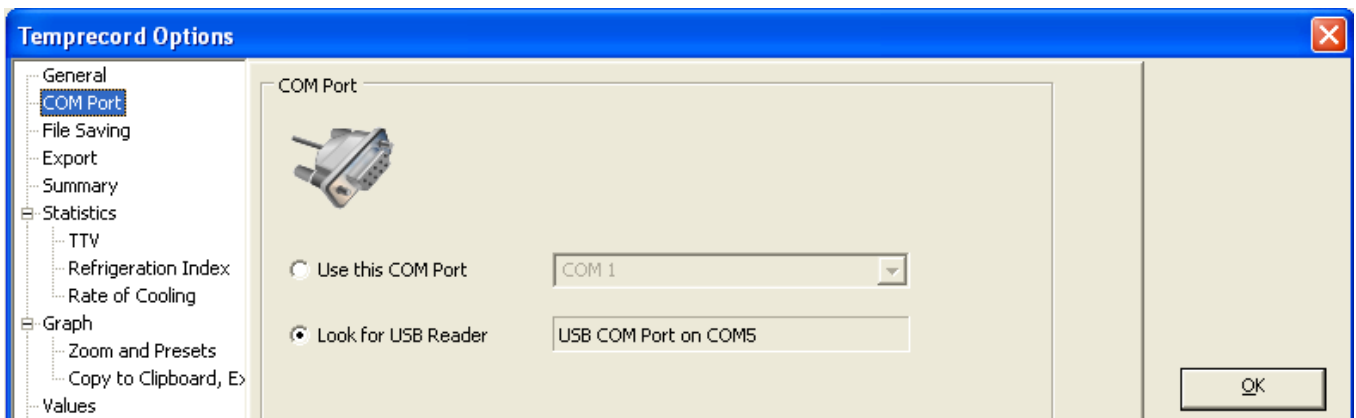
*TRW Configuration – Options/COM Port: RS-232 Serial COM Port Setting*

### TRW Configuration...

#### Options/COM Port: USB Communication Port Selection

Temprecord Reader Interface (SR2-USB Product Code # 953188) connects to any one of Computer's **USB** communication Ports. Most computers nowadays are fitted with multiple **USB Ports** as standard.

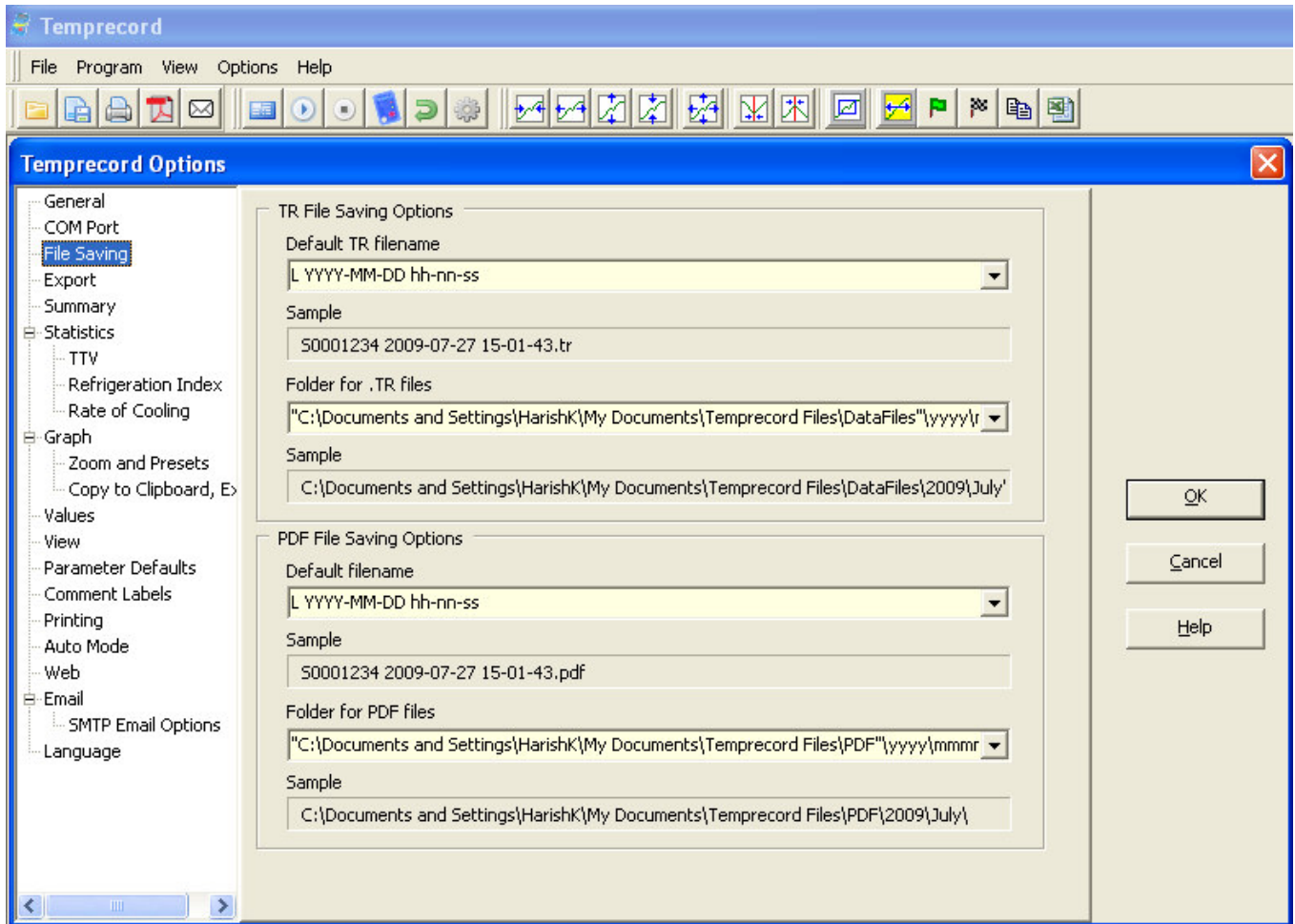
- Connect the Temprecord Reader Interface to any of the available USB Port on your computer.
- Select **Options** then **COM Port** to access COM Port settings screen
- Ensure that **Look for USB Reader** is selected. The TRW Software will automatically assign the COM Port allocated to Temprecord USB Reader Interface. The USB Drivers are pre-loaded during installation of TRW Software.
- Click **OK** to confirm.



*TRW Configuration – Options/COM Port: USB Reader COM Port Setting (Set by Software)*

## Temprecord for Windows – Options/File Saving Configuration...

### Options/File Saving



### TRW Configuration – Options/File Saving

#### TRW Configuration

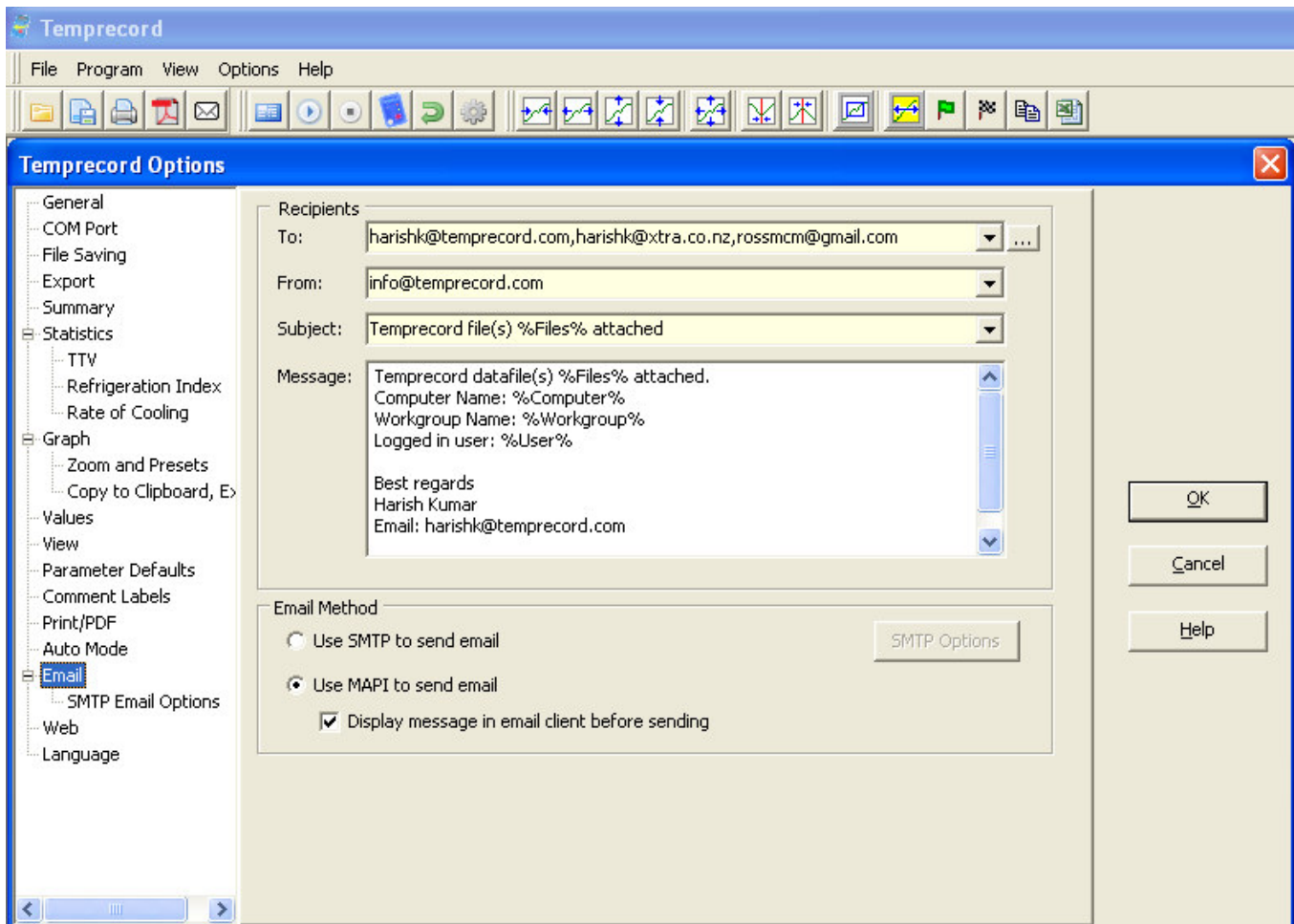
#### Options/File Saving

This feature screen enables User to setup Paths and Folders where Temprecord ‘DataFiles’ and ‘PDF’ Reports will be saved. Please read the built-in ‘Help’ file for further guidance.

The ‘DataFile’ names and ‘PDF’ Report file names are generated uniquely and automatically by the TRW Software. In most case the default settings applied when TRW is installed will work for most sites. However, each Site may apply settings as per SOP requirements.

## Temprecord for Windows – Options/Email: Use MAPI to Send Email...

### Options/Email: Use MAPI to Send Email



### TRW Configuration – Options/Email: Use MAPI to Send Email

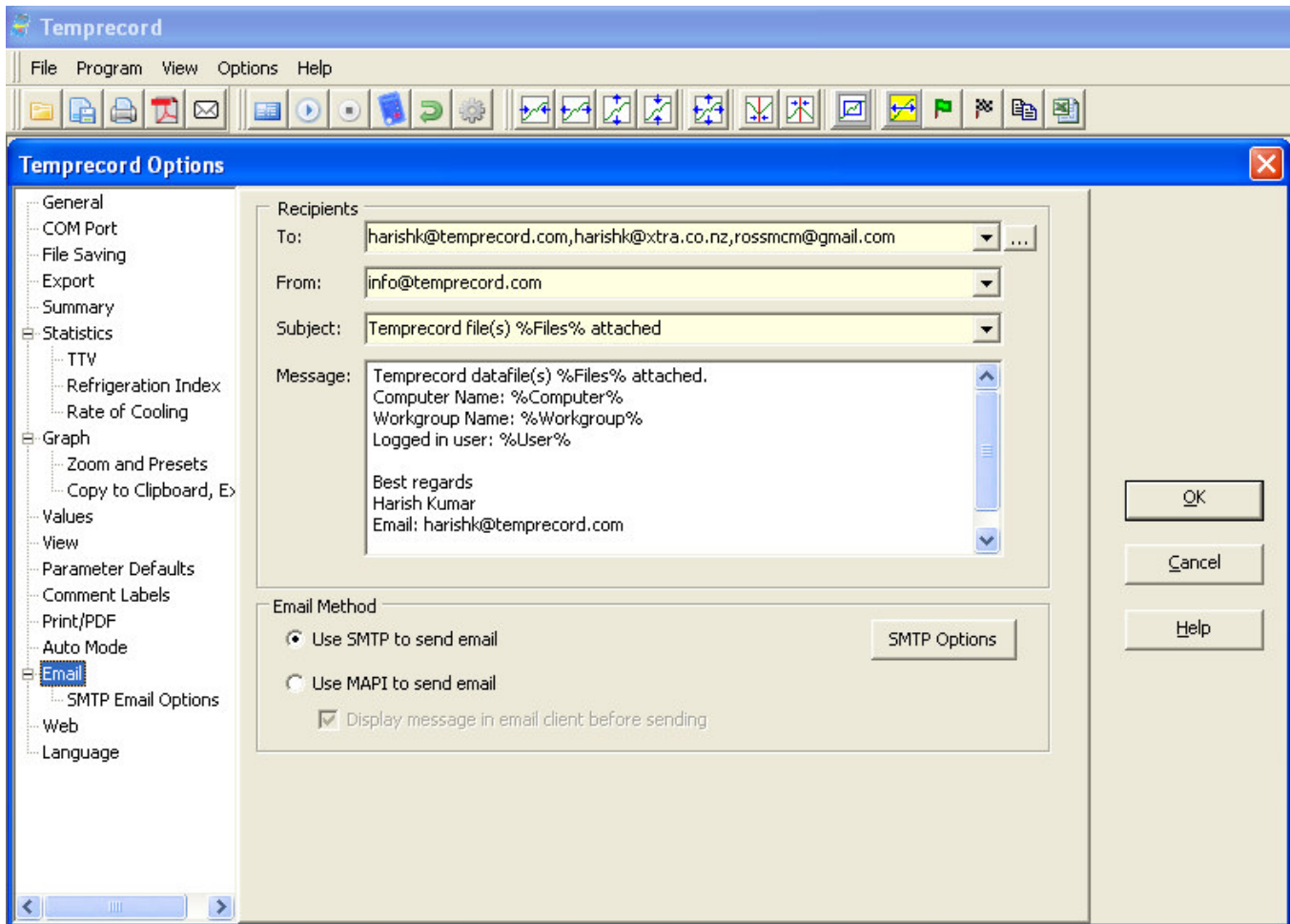
#### TRW Configuration

### Options/Email: Use MAPI to Send Email

When This Option is selected the TRW will use Email Client such as Microsoft Outlook (using MAPI) to send emails with attached datafile and/or PDF report files.

## Temprecord for Windows – Options/Email: Use SMTP to Send Email...

### Options/Email: Use SMTP to Send Email...



### TRW Configuration – Options/Email: Use SMTP to Send Email

#### TRW Configuration

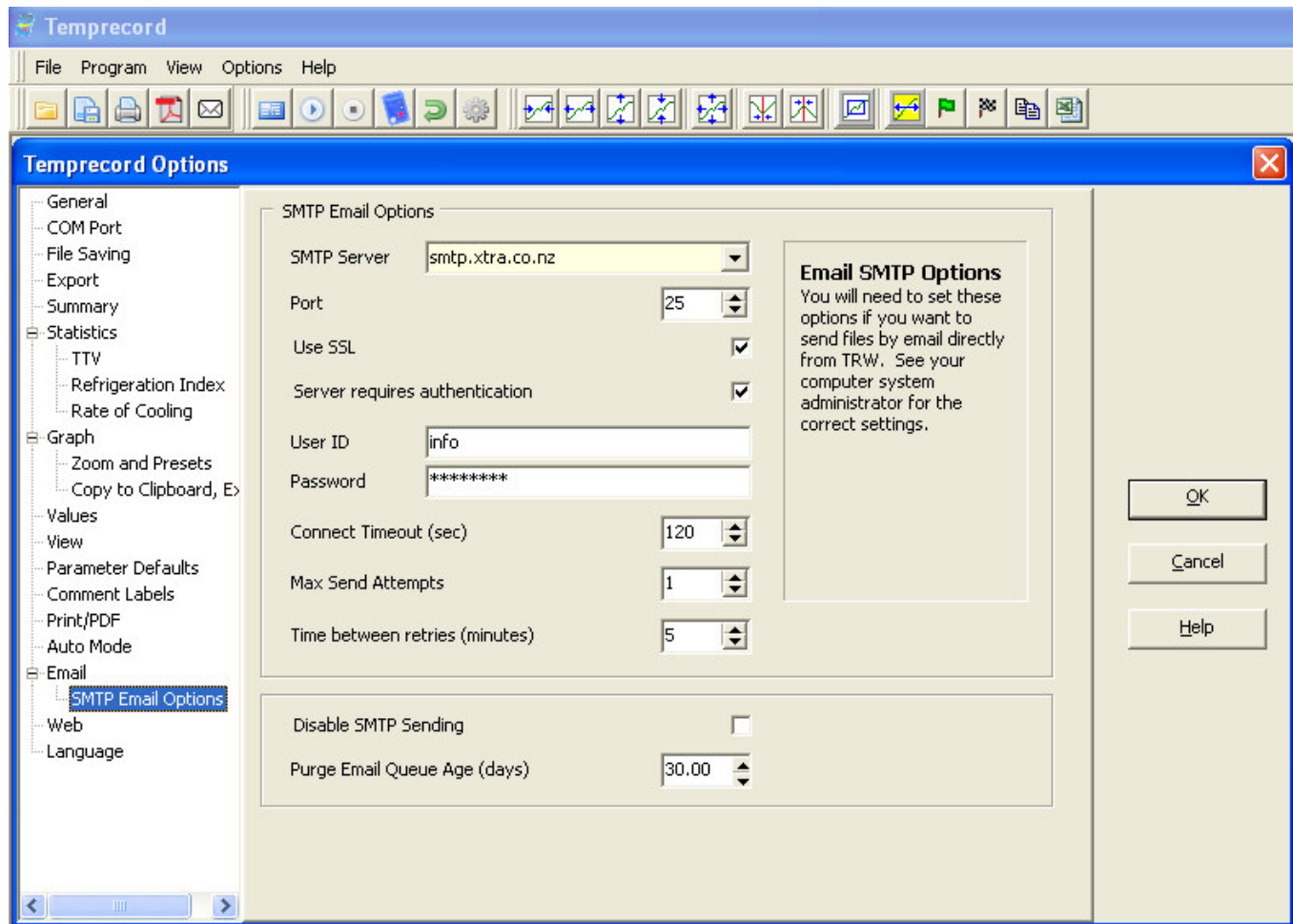
#### Options/Email: Use SMTP to Send Email

When This Option is selected the TRW will use Email Client such as Outlook Express (using SMTP) to send emails with attached datafile and/or PDF report files.

User will need to configure SMTP Options settings as provided by their Internet Service Provider (ISP). The SMTP Options need to be configured as per the following example screen...

## Temprecord for Windows – Options/Email: SMTP Email Options...

### Options/Email: SMTP Email Options...



### TRW Configuration – Options/Email: Use SMTP to Send Email

#### TRW Configuration

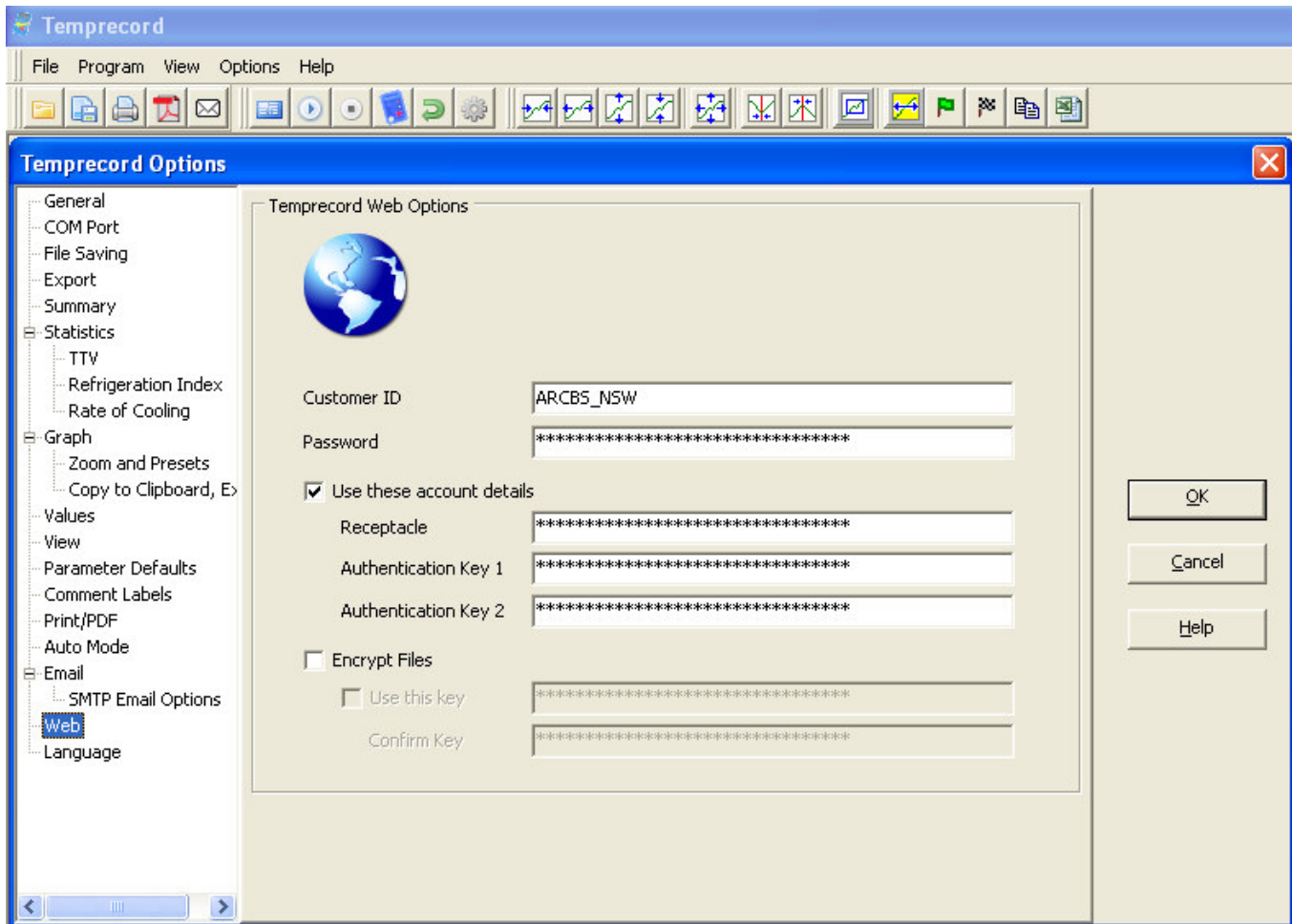
#### Options/Email: SMTP Email Options

User will need to configure SMTP Options settings as provided by their Internet Service Provider (ISP):

- SMTP Server (e.g. smtp.xtra.co.nz)
- Outgoing Port (e.g. 25)
- Enable 'SSL' and 'Server requires authentication' (check boxes)
- User ID (e.g. Info, QA, Joeblogg etc...)
- Password (for access to your ISP)

## Temprecord for Windows – Options/WEB Options...

### Options/Web: Temprecord Web Options...



### TRW Configuration – Options/Web: Temprecord Web Options

#### TRW Configuration

#### Options/Web: Temprecord Web Options

This feature has been added for Sites to allow Temprecord 'DataFiles' and 'PDF' Report files to be stored on secure Web Server / Storage System. Temp record will provide full instructions once this feature is fully tested and functional.